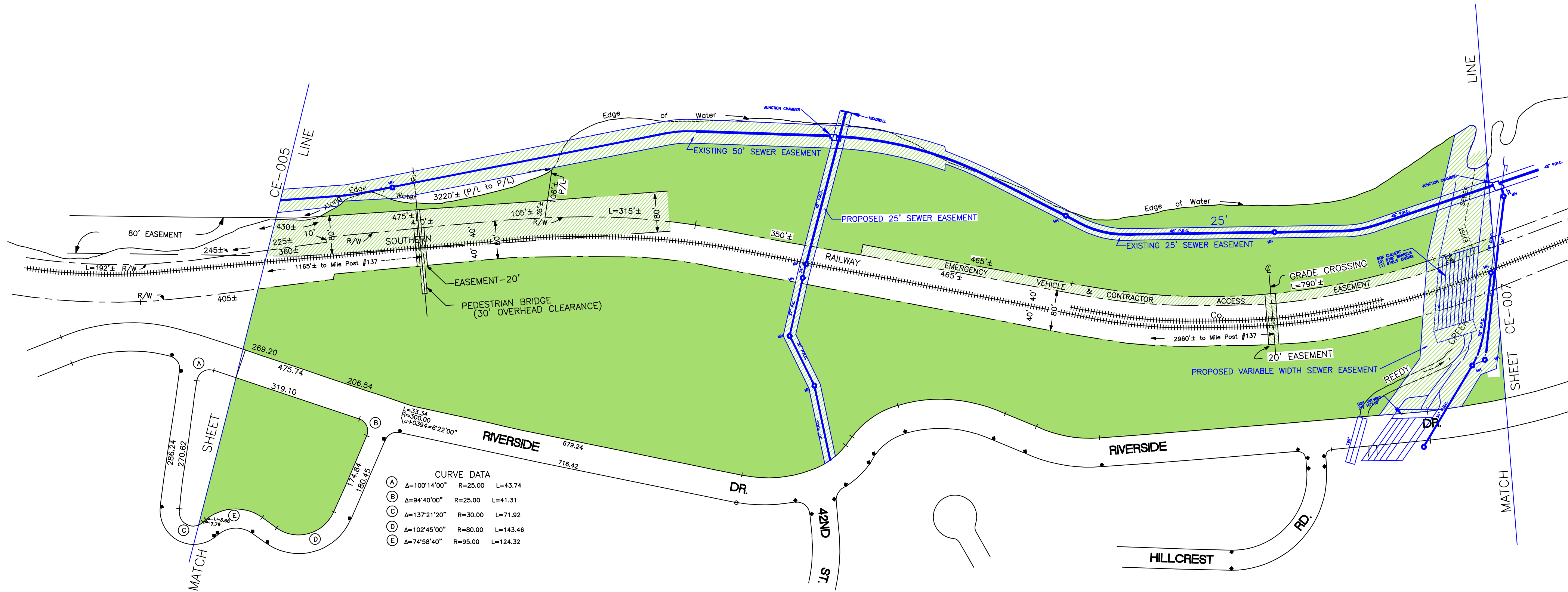
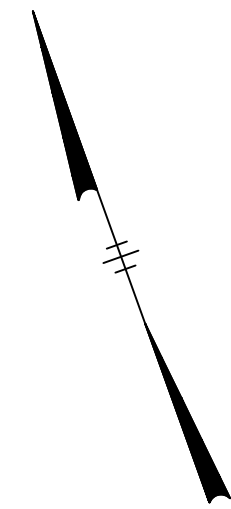


JAMES

RIVER



CURVE DATA

(A)	Δ=100°14'00"	R=25.00	L=43.74
(B)	Δ=94°40'00"	R=25.00	L=41.31
(C)	Δ=137°21'20"	R=30.00	L=71.92
(D)	Δ=102°45'00"	R=80.00	L=143.46
(E)	Δ=74°58'40"	R=95.00	L=124.32

**DRAFT -FOR REVIEW ONLY**

(JAMES RIVER PARK SYSTEM MAIN AREA)

DEPARTMENT OF PARKS, RECREATION AND  
COMMUNITY FACILITIES  
JAMES RIVER PARK SYSTEM

- LEGEND--
- JAMES RIVER PARK SYSTEM PROPERTY
  - JAMES RIVER PARK SYSTEM EASEMENTS
  - PROPOSED UTILITY SYSTEM EASEMENTS



Chief Design Engineer: \_\_\_\_\_  
 Survey Admin: \_\_\_\_\_  
 Capital Proj. Admin: \_\_\_\_\_  
 City Engineer: \_\_\_\_\_

MAP OF THE JAMES RIVER PARK SYSTEM PROPERTY  
 PROPOSED FOR CONSERVATION EASEMENT  
 BETWEEN THE JAMES RIVER AND RIVERSIDE DRIVE, FROM THE 1942  
 CORPORATION LINE TO THE VICINITY OF THE A.C.L. R.R. BRIDGE

REFERENCES: 0-16734 Sheet 4 of 7

REVISIONS

DESIGNED BY DRAWN BY: ECL CHECKED BY: CVJ	REVIEWED BY	FIELD NOTES	SCALE APPROX. 1" = 100'	DATE	PROJECT SHEET OF	DRAWING NO. CE-006(Rev)
---	-------------	-------------	-------------------------------	------	---------------------	----------------------------

Director of Public Works